



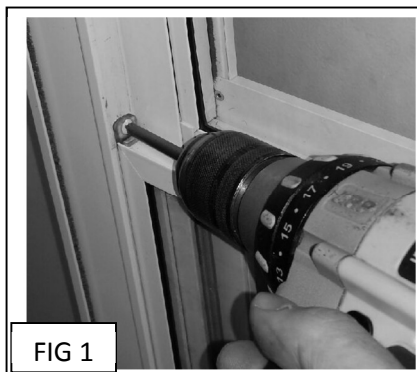
## INSTALLING THE SECURITY INTERLOCK CLIP

**TOOLS NEEDED:** Phillips screw driver and small flat bladed screw driver.

**KIT SHOULD CONTAIN THE FOLLOWING:** 2 clear wedges, one interlock clip and instructions.

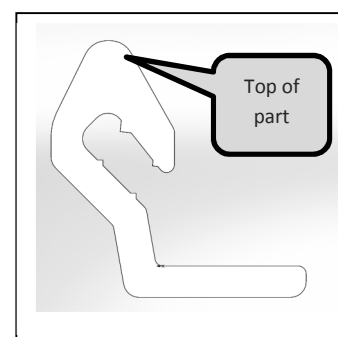
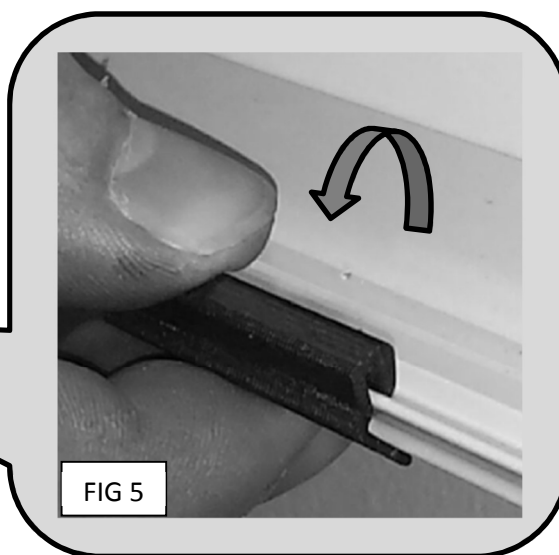
**Note:** All pictures are taken from the INTERIOR of the door.

### STEP 1: REMOVE BOTTOM SASH FROM DOOR.



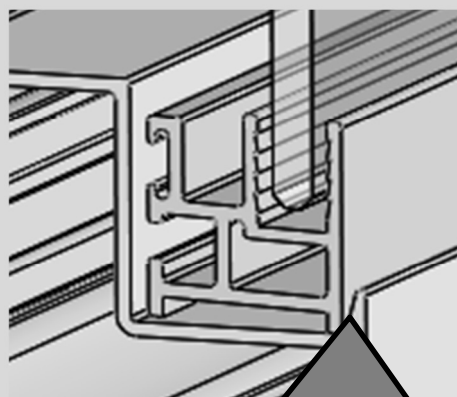
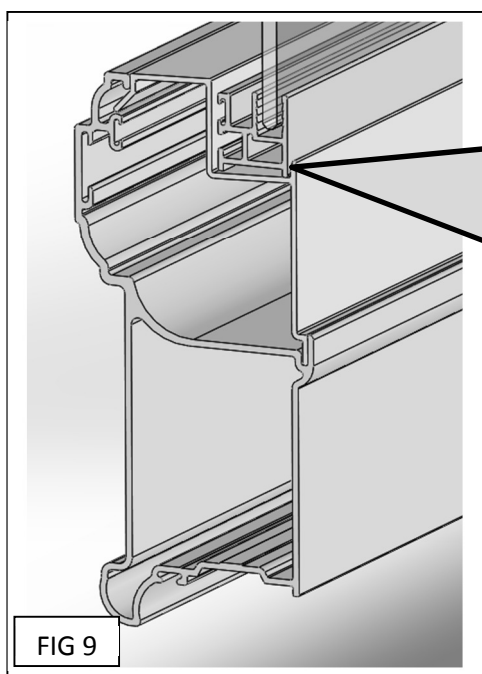
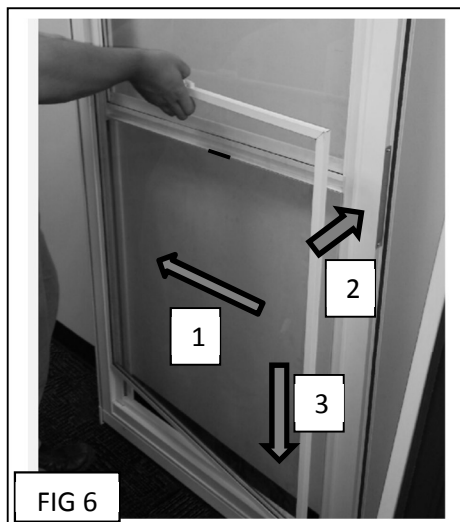
The bottom sash is held into place by 2 clear wedges that are attached with screws. Remove these screws as shown in figure 1. Then remove the wedges by using a screwdriver and slight upward pressure as shown in figure 2. Two new wedges are included in this kit in case you damage the original ones when you remove them. Finally, remove the bottom sash by sliding it all the way towards the handle side of the door and then rotating the opposite side of the sash outward to remove it as shown in figure 3. Lifting the sash up closer to the center of the door before rotating it outwards will make it easier to remove.

### STEP 2: INSTALL SECURITY INTERLOCK CLIP



The security clip is attached by snapping it into place on the bottom rail of the operating sash as shown in figure 4 and 5. The top of the clip should be placed over the lip on the sash and then rocked into place until you hear a snap. This means that the clip is properly locked into position. The clip should be centered, left to right, in the middle of the sash as shown in figure 4.

### STEP 3: INSTALL BOTTOM SASH INTO DOOR.



Make sure bottom sash is seated inside this channel and not on top of this leg.

Install bottom sash into door by first inserting one side of the sash into the door frame (side of sash closest to your door handle). Second, rotate the sash back into the door frame and then lower it down into the sill of the door. See figure 6.

It is important to notice figures 8 and 9. The sash must be seated inside the sill of the door frame (located at the bottom of the sash) as shown in these figures. If the sash is sitting on top of this leg there may not be enough room for your sash lock to engage. Slight pressure with your foot on the bottom of the sash while installing it can make it easier to get this installed correctly. See Figure 7

Finally, insert the wedges on both sides of the bottom sash and install screws into the holes from where the wedges were installed previously. You will need to gently tap the wedges into place until they make contact with the top of the bottom sash. Install the screws that you removed in Step one. See Figure 1.